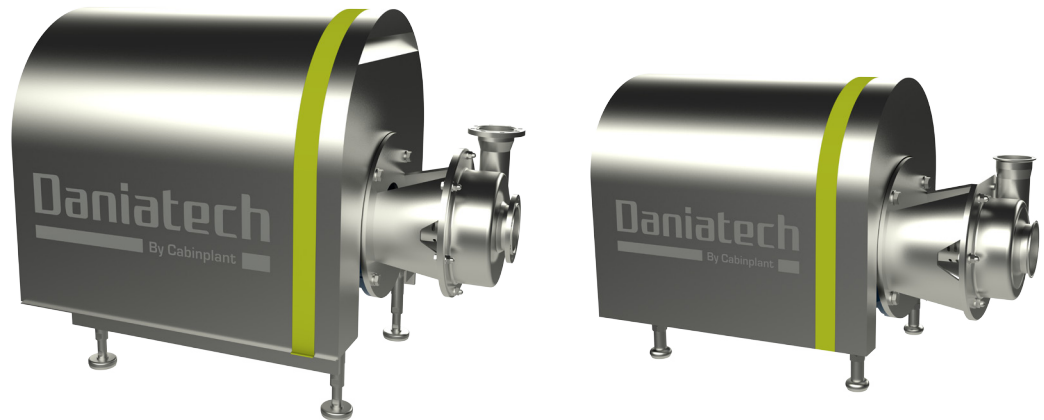


Daniatech DTI MixMaster



The DTI MixMaster is most energy-efficient solution for inline High Shear mixing on the markets.

The mixer works according to the rotor-stator principle, where a special closed mixing wheel passes the product through patented slots.

The mixer unit is very versatile and can be used in many setups and application. For low to medium viscosity the mixer performs the out pumping action itself.

For high-viscose applications (>250cp) the setup requires positive feeding.

Applications:

The High shear mixer pump offers two different types of operation:

- Batch operation - the mixer is placed in a circulation loop over a process vessel
- Inline setup - the mixer is placed between to process vessels and operates in single pass. For some applications the mixer works as a light homogenizer

Emulsion, Droplet size reduction, slurries, concentrates (Liquid/Liquid) Pigment solution. Homogenization down to 1 my lump free.

The DTI MixMaster is the most energy efficient and flexible self pumping mixer on the market:

- Low energi /high efficiency
- Strong shear rate-minimum energy consumption
- Big mixer Power
- Low service cost
- Designet according to EHEDG
- Step file on request

The DTI MixMaster is developed for products with low to medium viscosities.

Standard equipment:

- Mixer unit (WEG) (230/400V 50Hz) with shaft sealing (to be frequency controlled)
- Tri-clamp inlet/outlet
- Motor Cover
- Frame with 4 feeds

Daniatech
Roesbjergvej 9
DK-5683 Haarby
Denmark

www.daniatech.com
info@daniatech.com

Daniatech DTI MixMaster

Options:

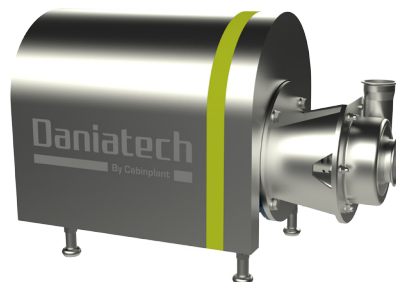
- Double mechanical shaft seal with Bürkert (1/8") solenoid valve and throttle valve
- Bypass loop for extra circulation over mixer
- Fitting SMS DIN/ISO Other on request
- Other motors, Nema exx., etc. on request
- Injector for powder intake with 100 litre funnel (See InjectMaster product sheet)
- Start/stop Box with soft starter
- Start/stop Box with inverter

Technical data:

Model:	Motor	Flow	Mixing Capacity	Inlet pressure
DTI MixMaster 160L	11 kW	40 (2 bar) m ³ /h	10 m ³ /h	0.5-5 Bar
DTI MixMaster 160H	15 kW	60 (2 bar) m ³ /h	15 m ³ /h	0.5-5 Bar
DTI MixMaster 200L	30 kW	90 (4 bar) m ³ /h	25 m ³ /h	0.5-5 Bar
DTI MixMaster 200H	45 kW	125 (4 bar) m ³ /h	30 m ³ /h	0.5-5 Bar

Model:	Outlet pressure	Service Water	Weight	Dimension (HxWxL)
DTI MixMaster 160L	2.5-7 Bar	20 l/h	75 kg	650 x 930 x 460 mm
DTI MixMaster 160H	2.5-7 Bar	20 l/h	80 kg	650 x 930 x 460 mm
DTI MixMaster 200L	2.5-8 Bar	20 l/h	110 kg	908 x 1150 x 680 mm
DTI MixMaster 200H	2.5-8 Bar	20 l/h	150 kg	908 x 1150 x 680 mm

DTI MixMaster 160



DTI MixMaster 200

